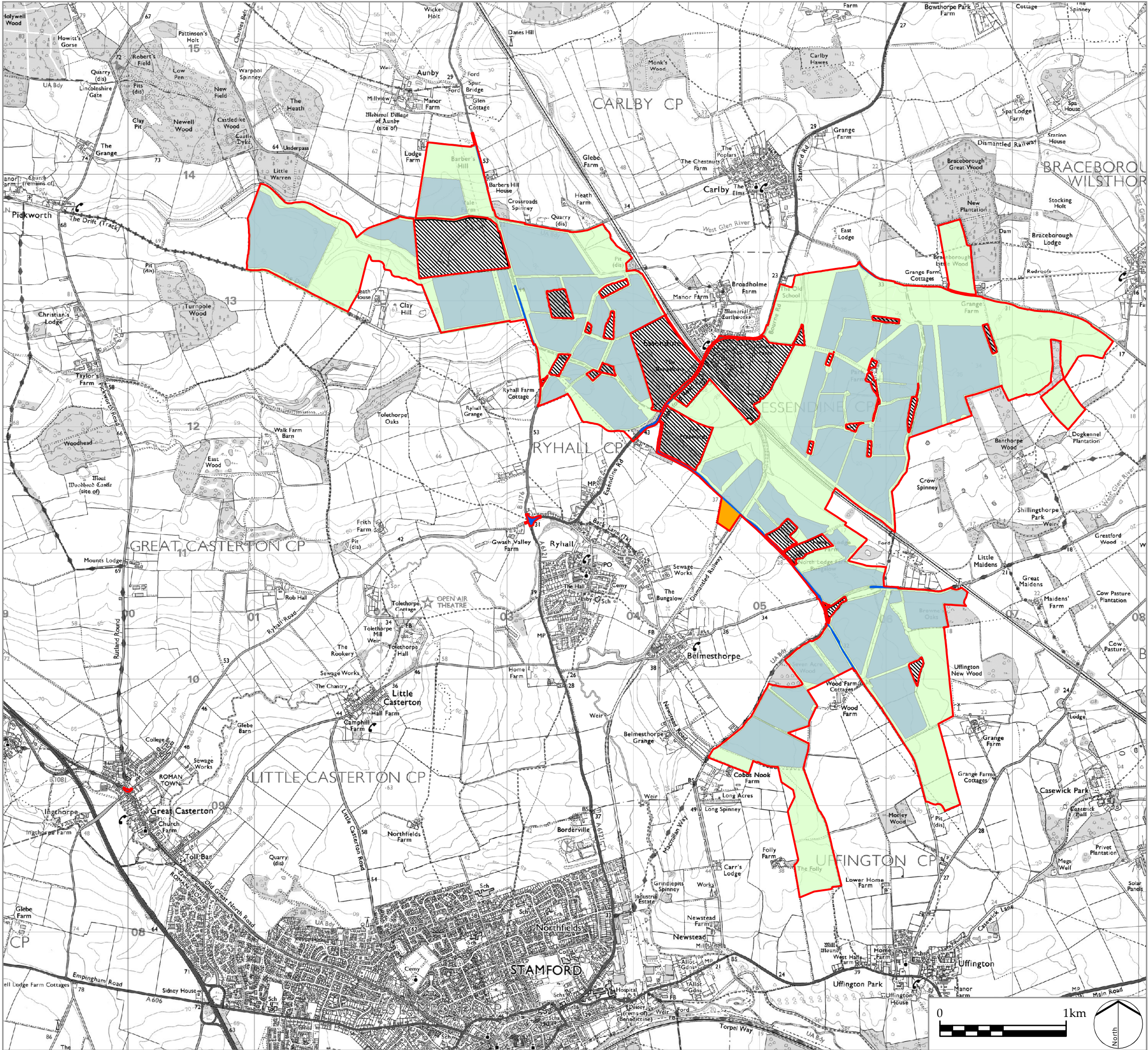


Z:\7863 NSIP SOLAR_FARM_CONFIDENTIAL\GIS\PROJECTS\FIGURES\7863_SK_603_EXTENTS OF SITE.MXD



Infrastructure Planning (Applications:
Prescribed Forms and Procedure) Regulations 2009
APFP Regulation: 5(2)(a)

PINS REFERENCE NUMBER
EN010127

LEGEND

- Order limits
- Solar PV Site
- Mitigation and Enhancement Areas
- Highways Works
- National Grid Ryhall Substation
- Areas outside the Order limits

P0 DCO Submission
REV. DESCRIPTION

RP 06/11/22
APP. DATE



PROJECT TITLE

MALLARD PASS SOLAR FARM

DRAWING TITLE

Figure 3.1: Extents of the Order limits, Solar PV Site,
Mitigation and Enhancement Areas and
Highway Works

ISSUED BY	Oxford	T: 01865 887050
DATE	Nov 2022	DRAWN AG
SCALE @A3	1:30,000	CHECKED PD
STATUS	Final	APPROVED RP

DWG. NO. 7863_SK_603 REV: P0

No dimensions are to be scaled from this drawing.
All dimensions are to be checked on site.
Area measurements for indicative purposes only.

© LDA Design Consulting Ltd. Quality Assured to BS EN ISO 9001 : 2015

Sources: Ordnance Survey